

An Old Coal Mining Town

Level H/I



Written and Illustrated by Travis Schaeffer



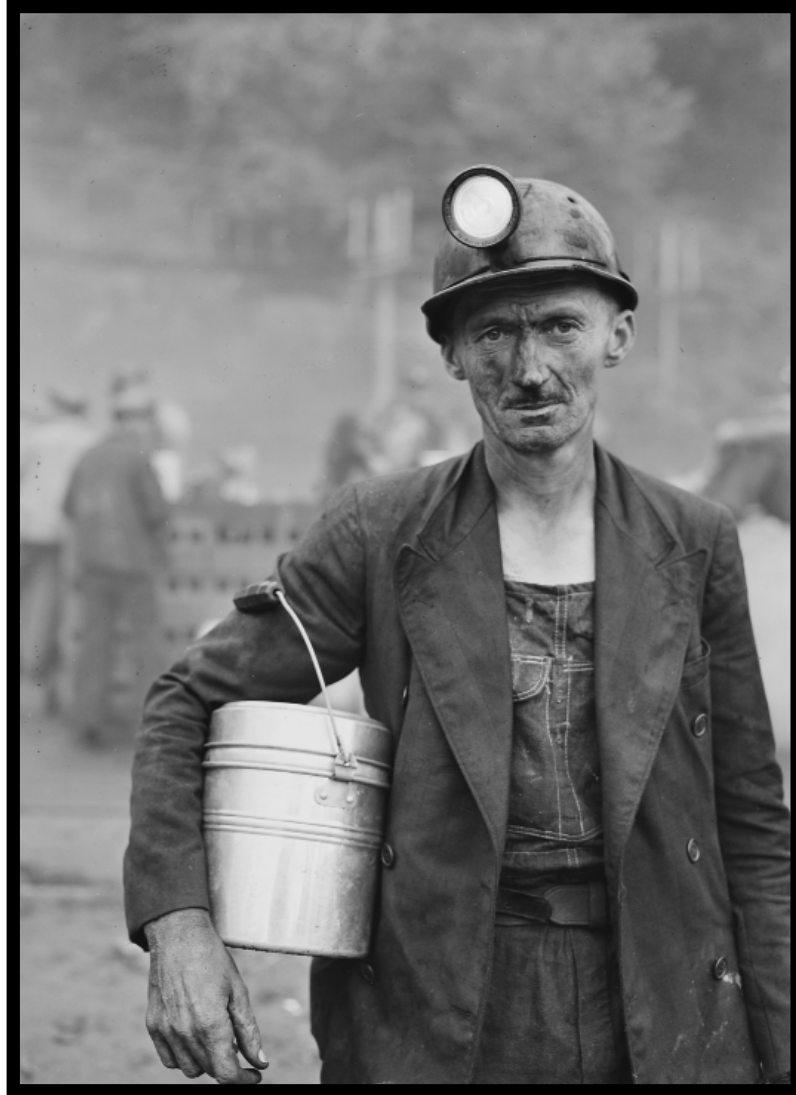
Simon is riding on a train. He is traveling across Pennsylvania. The train stops in an old coal mining town. Simon walks to a museum in town. Simon learns about how they mined coal in the past.



A **coal mine** is underground.

People dug tunnels into the ground.

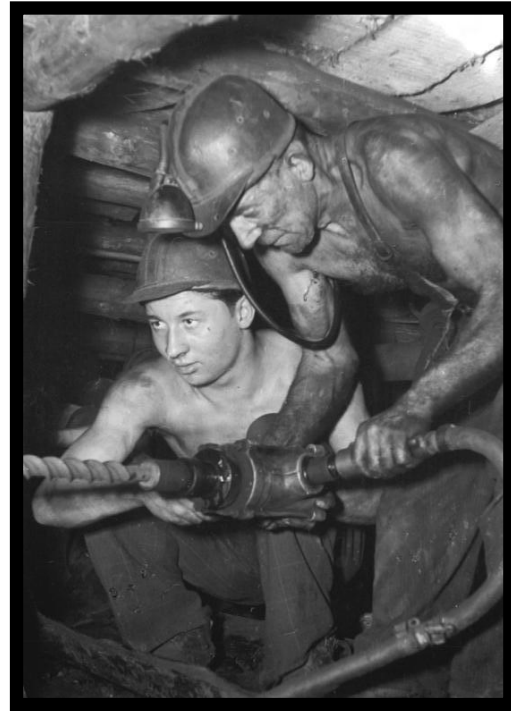
People gathered **coal** from the mines. People that worked in coal mines were called **coal miners**.



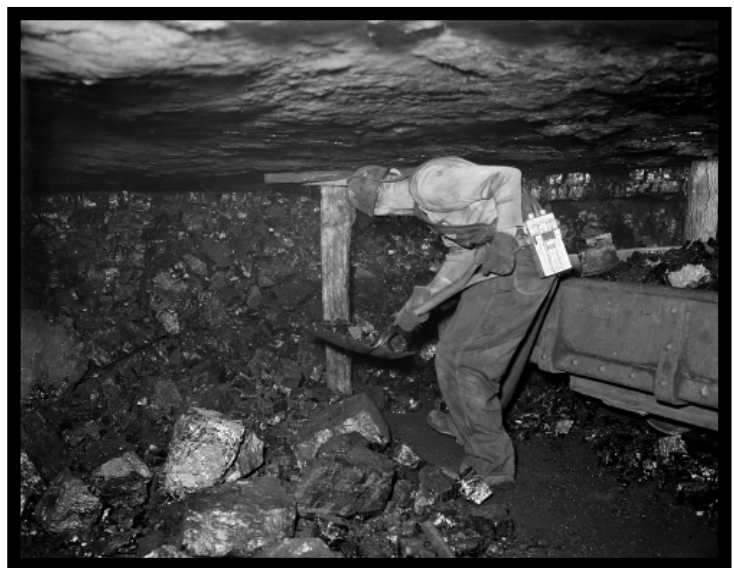
Simon sees an old photo of a coal miner. The miner is wearing a hat. Simon sees something on the front of the hat. What is on the hat?



Next to the photo is an old coal miner hat. It is the same hat in the photo. The hat has a light on it. Coal mines were very dark. Coal miners needed the light to work in the dark.



Simon sees more old photos.
They show miners using different
tools to dig for coal. What tools are
the miners using
to dig for coal?





DRILL



PICKAXE



SHOVEL

Next to the photo are old tools. They are the same tools

in the photos! Simon sees a

pickaxe, a shovel and a drill.

Coal miners used these tools to

dig for coal.



Simon sees another old photo. It shows a miner pouring a black powder into a tube.

What is the coal miner making?



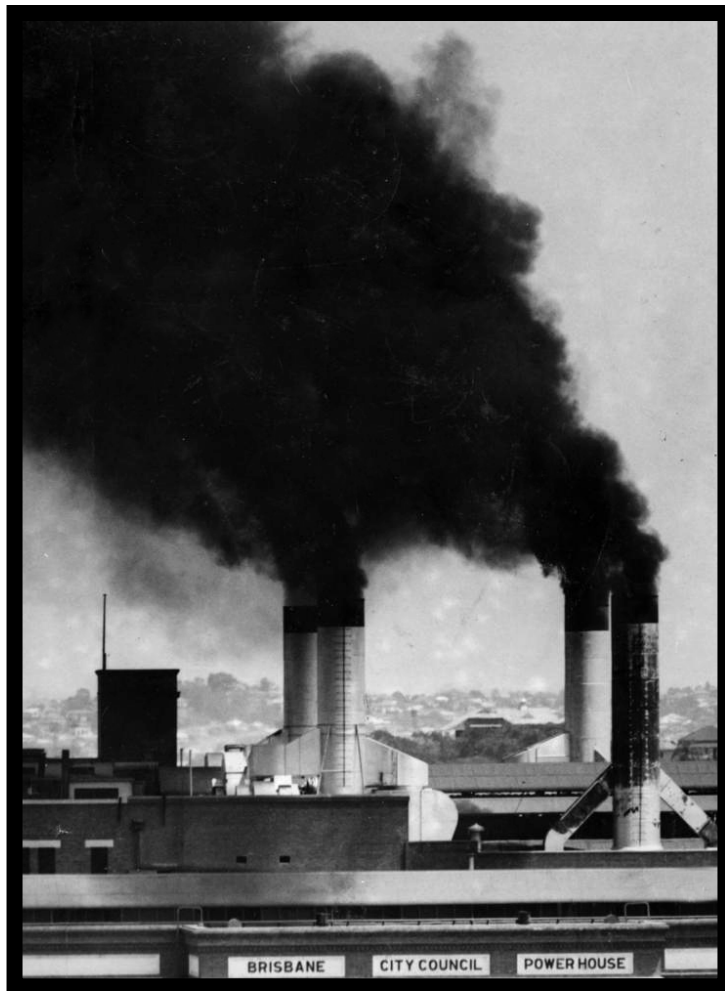
Next to the photo is a jar of black powder. It is the same black powder in the photo! A coal miner used black powder to make an explosion.



Simon sees another old photo. It shows a miner moving coal out of the the mine. What was used to carry coal out of the mine?



Next to the photo is a large cart. It is like the one in the photo! It is called a **coal cart**. It was used to move coal out of the mine. The coal cart moved on rails.



The energy from burning coal gives off heat. Burning coal is dirty. It gives off black smoke. It is not good for the environment.



Today, we dig for coal with big machines. Coal is used to make **electricity**. People can use electricity to heat their homes. Coal is a **non-renewable resource**. It means we cannot make more of it.



Simon leaves the museum.

Simon sees an old coal mine
in town. It is closed! Many
old coal mines have closed.



Simon hears the train whistle.

The train is ready to leave. He

gets back on the train. Simon

leaves the old coal mining town.

yes



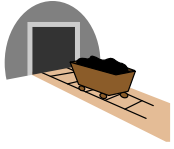
An Old Coal Mining Town

no



ride 	mining / dig 	underground 	Simon 	train 	Pennsylvania 	coal
mine 	gather 	old 	museum 	mine 	coal miner 	photo
see 	wear 	dark 	hat 	light 	tool 	pickaxe
pour 	make 	black 	shovel 	drill 	black powder 	explosion
carry 	burn 		coal cart 	energy 	smoke 	electricity

Glossary



coal mine - a place where coal is found in the ground



coal - a shiny black rock found in the ground



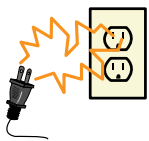
coal miner - a person who works in a coal mine



pickaxe - a tool used to dig for coal



coal cart - a tool used to carry coal out of a mine



electricity - a form of power and energy



non-renewable resource - a natural resource that cannot be remade or grown

Index for Photographs

The images found in this lesson fall under a Creative Commons license. Please note the citation listed for each individual image below. For information on use or redistribution of any of these images, please visit: <http://creativecommons.org/about/licenses/>

Title, Page 13 - http://upload.wikimedia.org/wikipedia/commons/a/ad/By_the_Coal_Mine%2C_Summerlee_-_geograph.org.uk_-_1471795.jpg

Page 1, Page 14 - <http://upload.wikimedia.org/wikipedia/commons/3/3a/Vintage-trains.JPG>

Page 2 - http://upload.wikimedia.org/wikipedia/commons/4/42/Mining_coal_.jpg

<http://upload.wikimedia.org/wikipedia/commons/8/83/Galena-171907.jpg>

Page 3 - http://upload.wikimedia.org/wikipedia/commons/a/a1/Harry_Fain%2C_coal_loader._Inland_Steel_Company%2C_Wheelwright_%5E1_%26_2_Mines%2C_Wheelwright%2C_Floyd_County%2C_Kentucky._-_NARA_-_541452.jpg

Page 5 - http://upload.wikimedia.org/wikipedia/commons/f/fd/Bundesarchiv_Bild_183-13287-0004%2C_Bergarbeiter_und_Lehrling_bohrend.jpg

http://upload.wikimedia.org/wikipedia/commons/6/62/Bundesarchiv_Bild_183-13297-0008%2C_Bergarbeiter_absteifend.jpg

http://upload.wikimedia.org/wikipedia/commons/d/d3/Harry_Fain_loading_coal_that_has_just_been_shot_from_the_face._He_will_load_about_16-17_tons_per_day._Inland_Steel..._-_NARA_-_541474.jpg

Page 6 - http://upload.wikimedia.org/wikipedia/commons/0/0f/Cz%C4%99stochowa_-_Museum_of_Iron_Mining_31.jpg

<http://commons.wikimedia.org/wiki/File:Szivlapat.jpg>

<http://upload.wikimedia.org/wikipedia/commons/5/57/Fluegeleisen1.jpg>

Page 7 - http://commons.wikimedia.org/wiki/File:Harry_Fain,_coal_loader,_makes_%22stemmings%22_which_are_used_in_proper_placing_of_powder_charge._Inland_Steel_Company..._-_NARA_-_541473.tif

Page 8 - http://commons.wikimedia.org/wiki/File:Black_Powder-1.JPG

Page 9 - http://upload.wikimedia.org/wikipedia/commons/3/36/Gary_coal_mining_1908.jpg

Index for Photographs

The images found in this lesson fall under a Creative Commons license. Please note the citation listed for each individual image below. For information on use or redistribution of any of these images, please visit: <http://creativecommons.org/about/licenses/>

Page 10 - http://upload.wikimedia.org/wikipedia/commons/b/b6/Pit_tubs_-_geograph.org.uk_-_460363.jpg

Page 11 - http://upload.wikimedia.org/wikipedia/commons/0/03/StateLibQld_1_112164_Smoke_pours_from_the_New_Farm_Power_House%2C_1952.jpg

Page 12 - http://upload.wikimedia.org/wikipedia/commons/b/b3/Strip_coal_mining.jpg